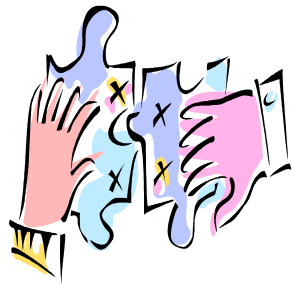


How We Work With You

At the outpatient service level, the outpatient service provider will work directly with you and your family.

For all children receiving a service more intensive than outpatient only,

a DPBHS clinical coordinator will guide you through every step of the service planning process and be there to answer



your questions and concerns. Your coordinator will work with you to plan individualized and integrated services for your child and family.

- You'll get a "Handbook for Child/Family Entering Care with DPBHS".
- Your family will be part of making decisions about treatment.
- Information about your child and family will be kept confidential.
- Our services are voluntary: you choose whether or not to use them.
- When a child is active with any other division in the Children's Department (child welfare or juvenile justice) or with other agencies, we will work with your family to coordinate your child's services.



This brochure was developed by the Division of Prevention and Behavioral Health Services.

**Need more information?
Unsure how to get help?**

**Call:
302-633-2571
or
1-800-722-7710**

**You can also visit us online at:
www.kids.delaware.gov**

Revision Date: July 2010

Delaware Children's Department

**Division of Prevention and
Behavioral Health Services**

ACCESSING CHILD MENTAL HEALTH AND SUBSTANCE ABUSE SERVICES IN DELAWARE



***Children and Families ~
Reaching Their Fullest Potential***

Who We Are

The Division of Prevention and Behavioral Health Services (**DPBHS**) is part of the Delaware Children's Department. We provide public behavioral healthcare to children statewide. Our mission is to provide accessible, effective treatment for children, through collaboration with families and service provider-partners.

Who We Serve

We provide **voluntary** mental health and substance abuse counseling and other treatment services to children through age 17 who need treatment and:

- are without insurance; or
- have Medicaid but require services more intensive than the 30 hours of outpatient service in the basic Medicaid, MCO-provided benefit.

Please note: Parents with private insurance and/or Medicaid are encouraged to reference their insurance card for mental health/behavioral health services.

Our Services Include

- Crisis Intervention
- Outpatient Services
- Behavioral Health Aides
- Intensive Outpatient Services
- Therapeutic Respite
- Day Treatment
- Individual Residential Treatment
- Residential Treatment
- Psychiatric Inpatient Treatment

Child Priority Response (CPR)

When a child is in a mental health or substance abuse crisis and could cause self-harm or harm someone else or has recently been exposed to a traumatic or violent event,

CALL:

New Castle County 302-633-5128
(North of C&D Canal)

New Castle County 1-800-969-HELP
(South of C&D Canal) (4357)

Kent County & Sussex County 302-424-HELP
(4357)

OR CALL TOLL FREE:
1-800-722-7710

STATEWIDE Child Priority Response service includes:

- On-site response when needed
- Mental health risk assessment
- Intensive follow-up care for child/family for up to 30 days in child's home/school/community
- Short-term supervised crisis bed for clinical observation and safety when indicated

Our Child Priority Response service may not transport or use physical restraint with any child due to legal and safety issues.



We are a CARF-Accredited Organization

Outpatient Treatment Services

Outpatient Services include mental health (**MH**) and/or substance abuse (**SA**) assessments and therapy (individual/family/group). You may **DIRECTLY CALL** any of the providers listed below for an appointment to access these services (302 area code). If more intensive services are needed, these providers will refer children and families to DPBHS.

NEW CASTLE COUNTY

Aquila (MH & SA) 999-1106	Catholic Charities (MH) 655-9624
Latin American Community Center (MH) 295-2160	Crossroads (SA) 652-1405
Delaware Guidance (MH) 652-3948	Jewish Family Services (MH) 478-9411
Open Door (MH & SA) 731-1504	SODAT (SA) 656-4044

KENT COUNTY

Open Door (MH & SA) 678-4911	Delaware Guidance (MH) 678-3020
Catholic Charities (MH) 674-1600	People's Place (MH & SA) 422-8026
SODAT (SA) 656-4044	

SUSSEX COUNTY

Aquila (SA) 856-9746	Catholic Charities (MH) 856-9578
People's Place (MH & SA) 422-8026	Delaware Guidance (MH) 645-5338
SODAT (SA) 656-4044	Open Door (MH & SA) 731-1504

FOR A COMPLETE LISTING OF OUR DCMHS PROVIDERS, PLEASE VISIT OUR WEBSITE: WWW.KIDS.DELAWARE.GOV